

Create Concise and Compelling DOE Reports: Tips and Tools



Richard Williams, BSChE, MSM, Six Sigma MBB

August 2025

Making the most of this learning opportunity



Hide the Control Panel

Mute your line



To prevent audio disruptions, all attendees will be muted.

Questions can be posted in the Question area, and I'll make every effort to address them during our brief one-hour webinar.

Questions may also be sent to stathelp@statease.com. Please provide your company name and, if you are using Design-Expert, the serial number (found under Help, About).

Note: The slides and a previous recording of this webinar is posted on the Webinars page of the Stat-Ease website for your review.

DOE Documentation: Webinar Purpose



- Know what belongs in a DOE report
 - Know what may be judiciously omitted
- Learn several methods to extract and edit DesignExpert / StatEase 360 content to use in standard reporting tools
- We will use only commonly available Microsoft® tools, with the assumption that the report will be created in Word or the presentation will be in PowerPoint
- We will not address specific report outlines which may differ between organizations

DOE Documentation

3

Agenda



- Hints on what to include in a DOE report
- Transferring and editing DesignExpert / StatEase 360 content for reports
 - Table Content
 - Graphical Content
- Wrap Up

DOE Documentation

4

Agenda



- **Hints on what to include in a DOE report**
- Transferring and editing DesignExpert / StatEase 360 content for reports
 - Table Content
 - Graphical Content
- Wrap Up

DOE Documentation

5

Hints on what to Include



- Our perspective is biased towards engineering reports which aim to drive home the key messages
- Best to avoid content that dilutes or distracts from the key points and discoveries
- Academic or research reports may require more elaborate content
- Your organization may have additional requirements
- The key is to find the best content to communicate your message to your audience!

DOE Documentation

6

Hints on what to Include



- Always include the raw data, generally in the appendix
- For standard designs (e.g., 2^k -p, PB, CCD, BBD, 3^k , simplex lattice) do so in standard order with a column showing the actual run sequence
- For **optimal designs**, include build type. Then sequentially sort by descending factor (e.g., C, B,A) then by build type. Include the run sequence column but omit standard order
- If the data table is too large, provide a durable way to preserve it for future reference

DOE Documentation

7

Hints on what to Include



- Report the model in reduced form, stating that all terms other than those needed for hierarchy achieved $p < 0.05$, as does the overall model p value.
- Refrain from reporting the ANOVA table and Fit Statistics
- Do report adjusted and predicted R^2 values
- If a transform gets applied, report this and why so (e.g., Box-Cox).
- Do not include diagnostic plots but disclose any outliers and whether they got ignored or not.

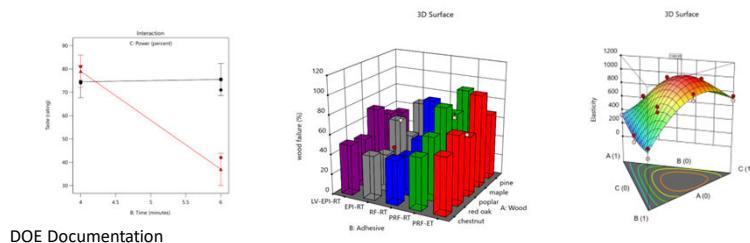
DOE Documentation

8

Hints on what Graphics to Include



- Use the plot that best communicates your message.
- Generally, this will be ME (if not part of any 2FI's) and 2FI plots (if any) for factorial models.
- For multilevel categorical, try the 3D 'skyscraper' plot.
- For process and mixture optimization show 3D plots.



DOE Documentation

9

Hints on what Graphics to Include



- For any multiresponse DOE optimizations include:
 - Ramps view
 - Overlay plot
 - with CIs if design large enough to support these, i.e., these do not completely shade out the 'sweet spot'.

DOE Documentation

10

Agenda



- Hints on what to include in a DOE report
- **Transferring and editing DesignExpert / StatEase 360 content for reports**
 - **Table Content**
 - Graphical Content
- Wrap Up

DOE Documentation

11

Table Content (the data table)



Method 1 – Snipping tool (Microsoft®)

- *Things don't always need to be hard!*

Std	Run	Factor 1 A:Temperature deg C	Factor 2 B:Pressure psig	Factor 3 C:Concentration percent	Factor 4 D:Stir Rate rpm	Response 1 Filtration Rate gallons/hr
1	12	24	10	2	15	45
2	7	35	10	2	15	71
3	8	24	15	2	15	48
4	13	35	15	2	15	65
5	16	24	10	4	15	68
6	14	35	10	4	15	60
7	9	24	15	4	15	80
8	11	35	15	4	15	65
9	2	24	10	2	30	43
10	10	35	10	2	30	100
11	1	24	15	2	30	45
12	3	35	15	2	30	104
13	4	24	10	4	30	75
14	6	35	10	4	30	86
15	5	24	15	4	30	70
16	15	35	15	4	30	96

DOE Documentation

12

Table Content (the data table)



Method 2 – Export from DX into Excel

- In table, Copy with Headings into Excel

Std	Run	Factor 1 A:Temperature deg C	Factor 2 B:Pressure psig	Factor 3 C:Concentration percent	Factor 4 D:Stir Rate rpm	Response 1 Filtration Rate gallons/hr
1	12	24	10	2	15	45
2	7	35	10	2	15	71
3	8	24	15	2	15	48
4	13	35	15	2	15	65
5	16	24	10	4	15	68
6	14	35	10	4	15	60
7	9	24	15	4	15	80
8	11	35	15	4	15	65
9	2	24	10	2	30	43
10	10	35	10	2	30	100
11	1	24	15	2	30	45
12	3	35	15	2	30	104
13	4	24	10	4	30	75
14	6	35	10	4	30	86
15	5	24	15	4	30	70
16	15	35	15	4	30	96

DOE Documentation

13

Table Content (the data table)



Method 2 – Export from DX into Excel

DEMO: Optimal Fish training exercise



- Data table cleanup in Design Expert
- Further cleanup in Excel
- Placement into Word

DOE Documentation

14

Agenda



- Hints on what to include in a DOE report
- **Transferring and editing DesignExpert / StatEase 360 content for reports**
- Table Content
 - **Graphical Content**
- Wrap Up

DOE Documentation

15

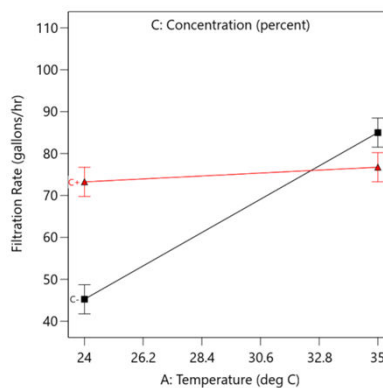
Graphical Content



Method 1 – Snipping Tool (again)

Hints:

- Image can be scaled
- Text and font cannot be modified after capture
- DX preferences can be used to change fonts before capture
- Note: preferences will be saved as the default unless set back to original



DOE Documentation

16

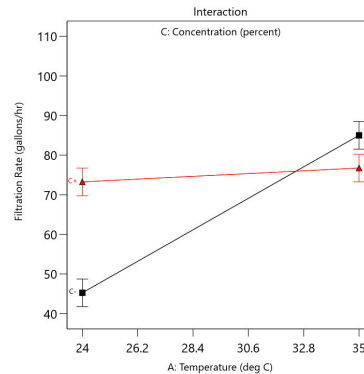
Graphical Content



Method 2a – export bitmap graphic directly from DX

Hints:

- Turn off Legend (View, show legend unchecked)
- Right-click image, export to...
- Export as bitmap allows the image to be resized
- Cannot edit text etc.



DOE Documentation

17

Graphical Content



Method 2b – export metafile graphic directly from DX



Hints:

- Turn off Legend (View, show legend unchecked)
- Right-click image, export to...
- Export as Enhanced Metafile
- Select image in PowerPoint and Ungroup
- ✓ Individual components can now be edited
- **Note: it is best to edit in PowerPoint even if the final graphic will be in Word**

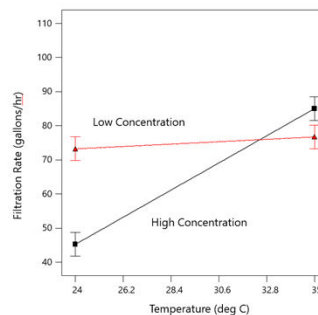


Figure 1: Impact of Temperature on Filtration Rate at High and Low Formaldehyde Levels

DOE Documentation

18

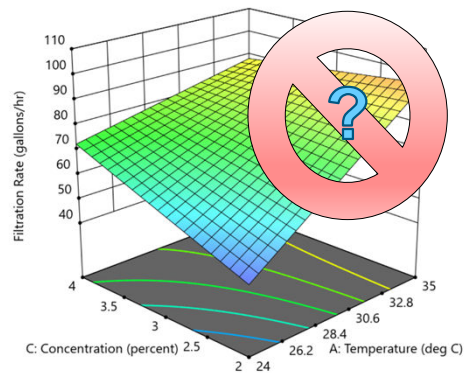
Graphical Content



Method 2b – export metafile graphic directly from DX

Hints:

- You may encounter difficulties editing 3D and Contour plots using this technique
- Use of the techniques in the previous 2 slides are recommended
- Or, consider one last approach...



DOE Documentation

19

Graphical Content



Method 3 – Using Microsoft® Photos and Designer

- Export graph to file (png type)
- Open file in Photos app
- Select Edit (upper left)
- Crop as desired
- Erase undesired features (text) using the eraser tool
- Adjust brightness / color as needed
 - Take highlights to 100% (or the image will have a grey background)
 - Modify other sliders as desired
- Save the image (upper right)
- Edit in Designer
 - Add text
- Copy Image (upper right)
- Paste in PowerPoint



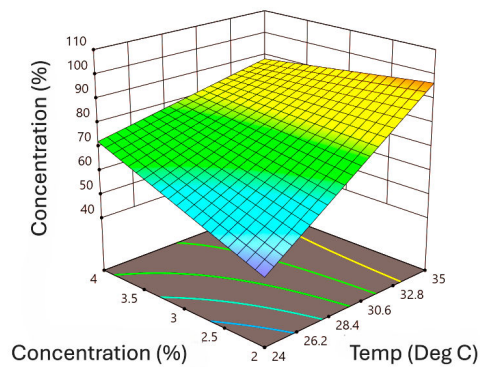
DOE Documentation

20

Graphical Content



Method 3 – Using Microsoft® Photos and Designer



DOE Documentation

21

Agenda



- Hints on what to include in a DOE report
- Transferring and editing DesignExpert / StatEase 360 content for reports
 - Table Content
 - Graphical Content
- **Wrap Up**

DOE Documentation

22

Concise and Compelling DOE Reports



Wrap-Up

- Knowing what to report is critical
 - The impact of your work depends on the story you tell
 - Generally, it is best to keep the message simple
 - Focus on impact
 - Relegate detail to the appendix
 - But you are the author and must decide what is relevant within the context of your organization or institution

DOE Documentation

23

Concise and Compelling DOE Reports



Wrap-Up

- DOE reporting requires extracting and editing content from Design Expert / StatEase 360
 - Tables are best edited in Microsoft Excel
 - Graphics content can be extracted through
 - Snipping Tool
 - Directly exporting graph
 - Bitmap (scalable)
 - Enhanced Metafile (more editable)
 - Export to File, edit in Photos + Designer

DOE Documentation

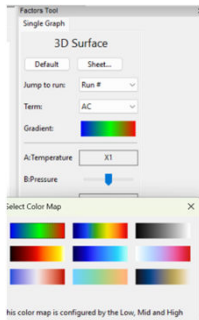
24

Concise and Compelling DOE Reports

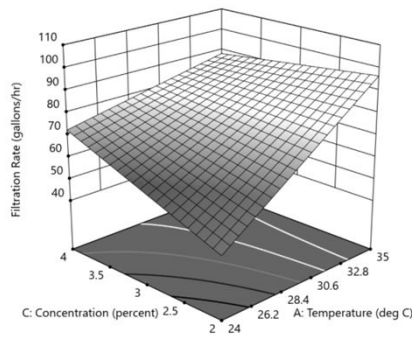


Wrap-Up

- One last parting gift
 - The color gradient can be more carefully managed in the 2025 release!



DOE Documentation



25

Stat-Ease Training: Sharpen Up Your DOE Skills



Modern DOE for Process Optimization Mixture Design for Optimal Formulations

Individuals	Teams (6+ people)
Improve your DOE skills	Choose your date & time
Topics applicable to both novice and advanced practitioners	Add company case studies

Email list sign up:

www.statease.com/publications/signup/

DOE Documentation

26

